

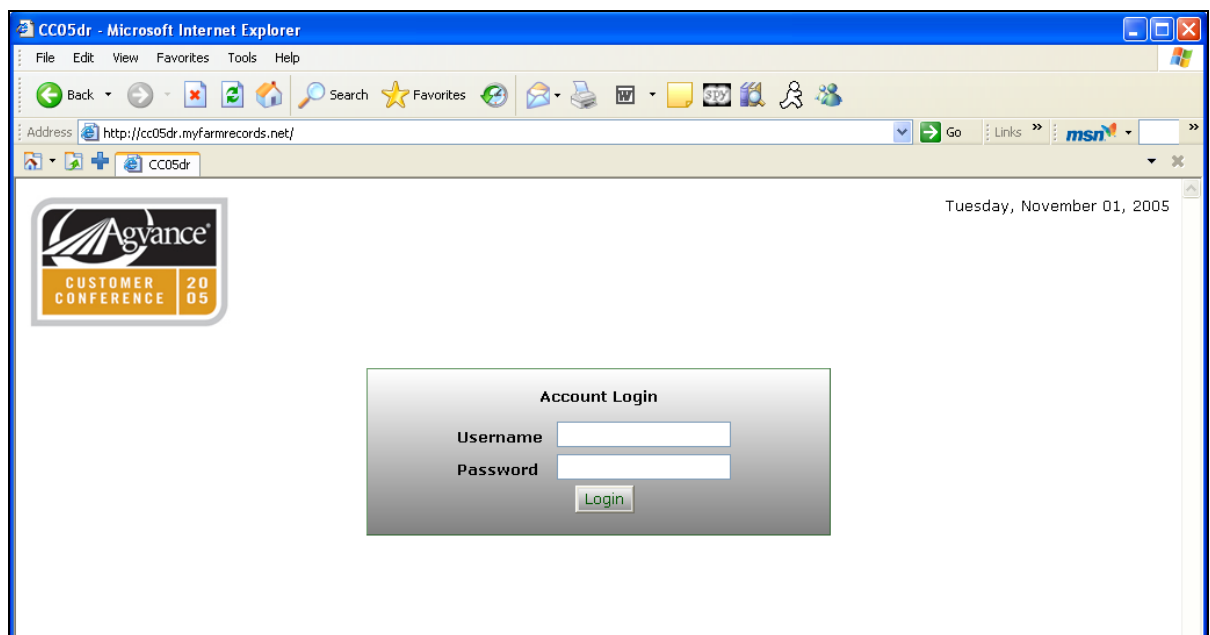
Grain User Instructions

Overview

This document lists the procedures for a My Farm Records user to log in and navigate the site to view their Grain Delivery and Grain Summary online. The document is divided into two sections. Section 1 includes the login procedures for My Farm Records. Section 2 includes information on the features and different pages throughout the Grain module.

Section 1: Logging into My Farm Records

1. Go to [://yourdomain.myfarmrecords.net](http://yourdomain.myfarmrecords.net).



2. Type in your **Username** and **Password** and click **Login**.

Section 2: Pages and Features within My Farm Records

There are several pages within the My Farm Records site. At any time while you are logged onto the My Farm Records site, you may use the navigation bar to view any part of your Grain information.

1. Grain Delivery

Assembly Sheets

The *Grain Delivery* page allows you to display Assembly Sheets, Scale Tickets, and Contracts. To view Assembly Sheets, choose 'Assembly Sheets', the date range, and click **Go**.

CC05dr - Microsoft Internet Explorer
Address: http://cc05dr.myfarmrecords.net/index.aspx?mid=5
Tuesday, November 01, 2005
Logged in as Mark Smith

Account Summary | Account Details | Product Summary | **Grain Delivery** | Grain Summary | Field Data | Field Plan | Logout

Change Account: SMI Mar
Start Date: Nov 1 2002
End Date: Nov 1 2005
Commodity: CORN
Status: Open

Assembly Sheets Scale Tickets Contracts

Assembly Sheets for SMI Mar

Assembly Sheet Number: 13874

Gross Units: 3808.21
Dockage/Shrink: 0
Net Units: 3808.21
Last Del Date: 09/30/2005

Status	Contract ID	Split Customer	Split %	Shared Units	Settled Units
Open		Mark Smith	100	3808.21	0

Scale Tickets

Scale No.	Date	Gross Weight	Net Weight	Net Units	Price
136349	Sep 30, 2005	77500	50240	897.14	\$0.00
136361	Sep 30, 2005	64300	37640	672.14	\$0.00
136456	Oct 01, 2005	53180	28820	514.64	\$0.00
136494	Oct 01, 2005	58140	33800	602.57	\$0.00

The Assembly Sheet displays the Assembly Sheet Number, Gross Units, Dockage/Shrink, Net Units, and Last Delivery Date. Click on the Scale No. to view individual detail scale ticket information.

Scale Tickets

CC05dr - Microsoft Internet Explorer

Address: <http://cc05dr.myfarmrecords.net/index.aspx?mid=5>

Tuesday, November 01, 2005
Logged in as [Mark Smith](#)

Agvance
CUSTOMER CONFERENCE 2005

Account Summary | Account Details | Product Summary | **Grain Delivery** | Grain Summary | Field Data | Field Plan | Logout

Change Account: SmiMar

Start Date: Nov 1 2002 End Date: Nov 1 2005

Commodity: CORN Status: Open

Assembly Sheets Scale Tickets Contracts

Scale Tickets for SmiMar

Scale No.	Assembly No.	Date	Gross Units	Net Units	Location
136349	13874	Sep 30, 2005	897.14	897.14	Main
136361	13874	Sep 30, 2005	672.14	672.14	Main
136456	13874	Oct 01, 2005	514.64	514.64	Main
136494	13874	Oct 01, 2005	603.57	603.57	Main
136537	13874	Oct 01, 2005	514.29	514.29	Main
136575	13874	Oct 02, 2005	606.43	606.43	Main
136596	14004	Oct 02, 2005	862.50	839.56	Main
136636	14048	Oct 02, 2005	582.14	577.25	Main
136649	14048	Oct 03, 2005	562.86	558.92	Main
136665	14004	Oct 03, 2005	534.64	525.66	Main
136700	14048	Oct 03, 2005	502.50	502.50	Main
136750	14048	Oct 03, 2005	548.93	548.93	Main

The Scale Tickets page displays the Scale Number, Assembly Number, Date, Gross Units, Net Units, and Location. You have the option of selecting which commodity you would like to view the contracts for. You are also able to select the contracts of a certain status to view. Click on the 'Scale Number' to view that scale ticket or click on the 'Assembly Number' to view that assembly sheet.

Scale Ticket Detail

http://cc05dr.myfarmrecords.net/display.aspx?mid=11&st=136349 - M...

Address: <http://cc05dr.myfarmrecords.net/display.aspx?mid=11&st=136349>

Scale Ticket: 136349 Commodity: CORN

Location: Main Date: Sep 30, 2005 [Print](#)

Gross Wt: 77500 Base Price: \$ 0.00 [Close Window](#)

	Grade Factor	Value	Prem/Disc
Moisture Shrink	14.5	0	
Test Weight	58.6	0	
Foreign Material	2.1	0	
Damage	3.1	0	
Heat Damage	0	0	
Musty	0	0	
Weevil	0	0	
Direct Delivery	0	0	
Comm obj foreign oder	0	0	

Comments:

Contracts

CC05dr - Microsoft Internet Explorer
 Address: http://cc05dr.myfarmrecords.net/index.aspx?mid=5
 Tuesday, November 01, 2005
 Logged in as [Mark Smith](#)

Agvance CUSTOMER CONFERENCE 20 05

Account Summary | Account Details | Product Summary | **Grain Delivery** | Grain Summary | Field Data | Field Plan | Logout

Change Account: SmiMar
 Start Date: Nov 1 2002
 End Date: Nov 1 2005
 Commodity: BNS
 Status: ALL
 Assembly Sheets Scale Tickets Contracts

Purchase Contracts for SmiMar

Contract No.	Date	Contract Units	Delivered Units	Contract Type	Price	Status
385	Feb 25, 2005	300.00	0.00	Priced	\$5.57	Closed

The Contracts page allows you to select which commodity the contract is for and displays the following information for that contract: Contract Number, Date, Contract Units, Delivered Units, Contract Type, Price, and Status.

Agvance CUSTOMER CONFERENCE 20 05
 Tuesday, November 01, 2005
 Logged in as [Mark Smith](#)

Account Summary | Account Details | Product Summary | **Grain Delivery** | Grain Summary | Field Data | Field Plan | Logout


Change Account: SmiMar
 Start Date: Nov 1 2002
 End Date: Nov 1 2005
 Commodity: BNS
 Status: ALL
 Assembly Sheets Scale Tickets Contracts

Purchase Contract 385 for SmiMar

Location Main	Date: Feb 25, 2005
Net Quantity 300	Status: Closed
Delivered Qty 0	
Cash Price 5.5700	Delivery Date Feb 22, 2005
Basis Price 0	Delivery Qty 300
Grade Used	
Comments SETTLED FROM WAREHOUSE 3/23/05	

By clicking on the Contract number, you are able to view the details of the Contract. This detail displays Location, Net Quantity, Delivered Quantity, Cash Price, Basis Price, Grade Used, and Comments. It also displays the Date, Status, Delivery date, and Delivery Quantity.

Grain Summary



Tuesday, November 01, 2005
 Logged in as [Mark Smith](#)

Account Summary
Account Details
Product Summary
Grain Delivery
Grain Summary
Field Data
Field Plan
Logout

Change Account:

Start Date: End Date:

Commodity:

Current Commodity Balances for SmiMar

Unpaid Priced	Open Storage	Price Later	Grain Bank	Warehouse Receipt	Basis Fixed
0	0	2403.0000	2292.3300	0	0

From 11/1/2002to 11/1/2005

	Units	Share Units
Delivered	0	8695.33
Direct Delivered	--	0
Paid Settled Units	--	6175

The *Grain Summary* page displays the 'Unpaid Price', 'Open Storage', 'Price Later', 'Grain Bank', 'Warehouse Receipt', and 'Basis Fixed'. The page also displays the 'Units' and 'Share Units' for Delivered, Direct Delivered, and Paid Settled Units. By clicking on 'Delivered', you are able to view the 'Assembly Sheets'.